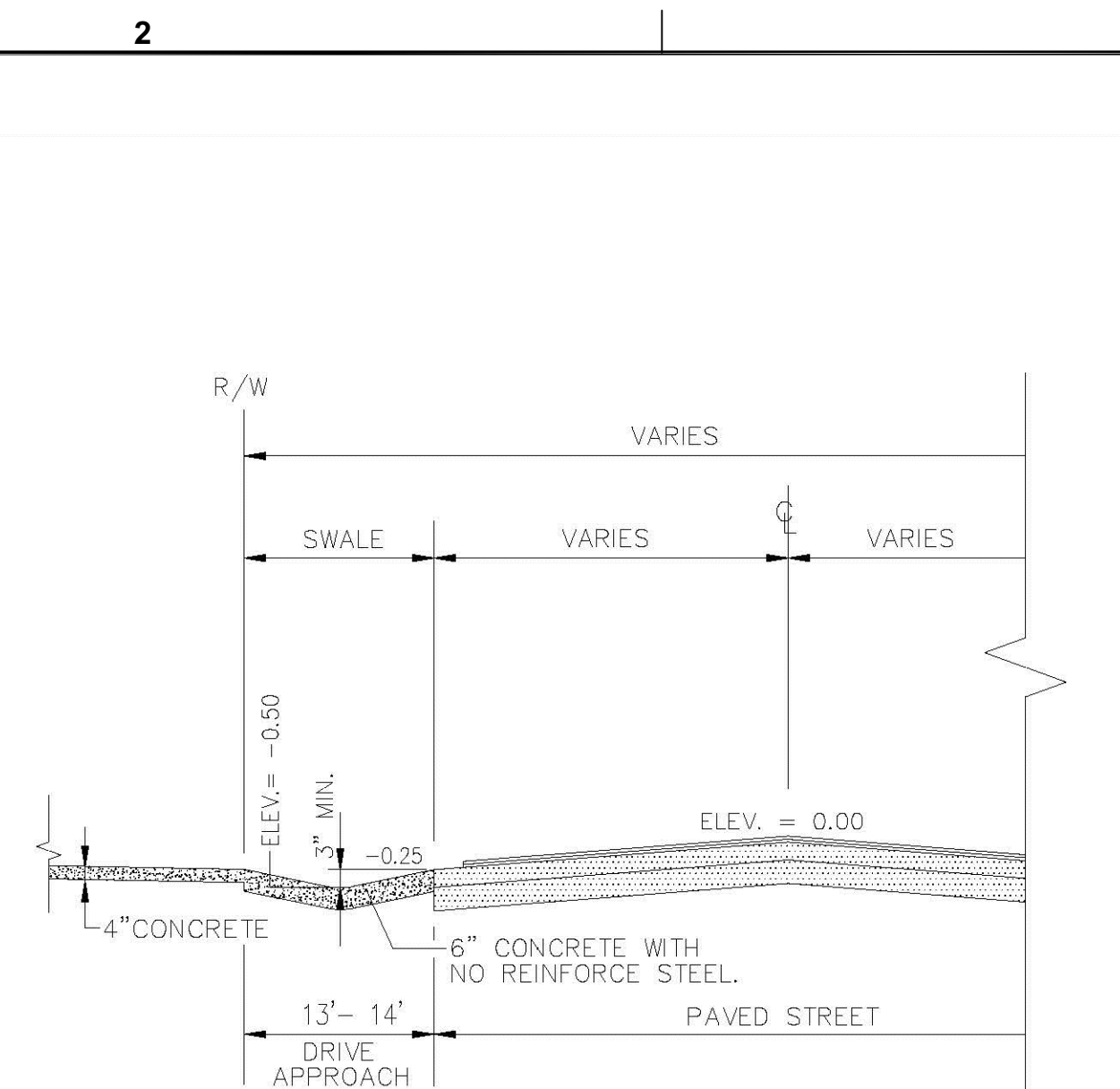


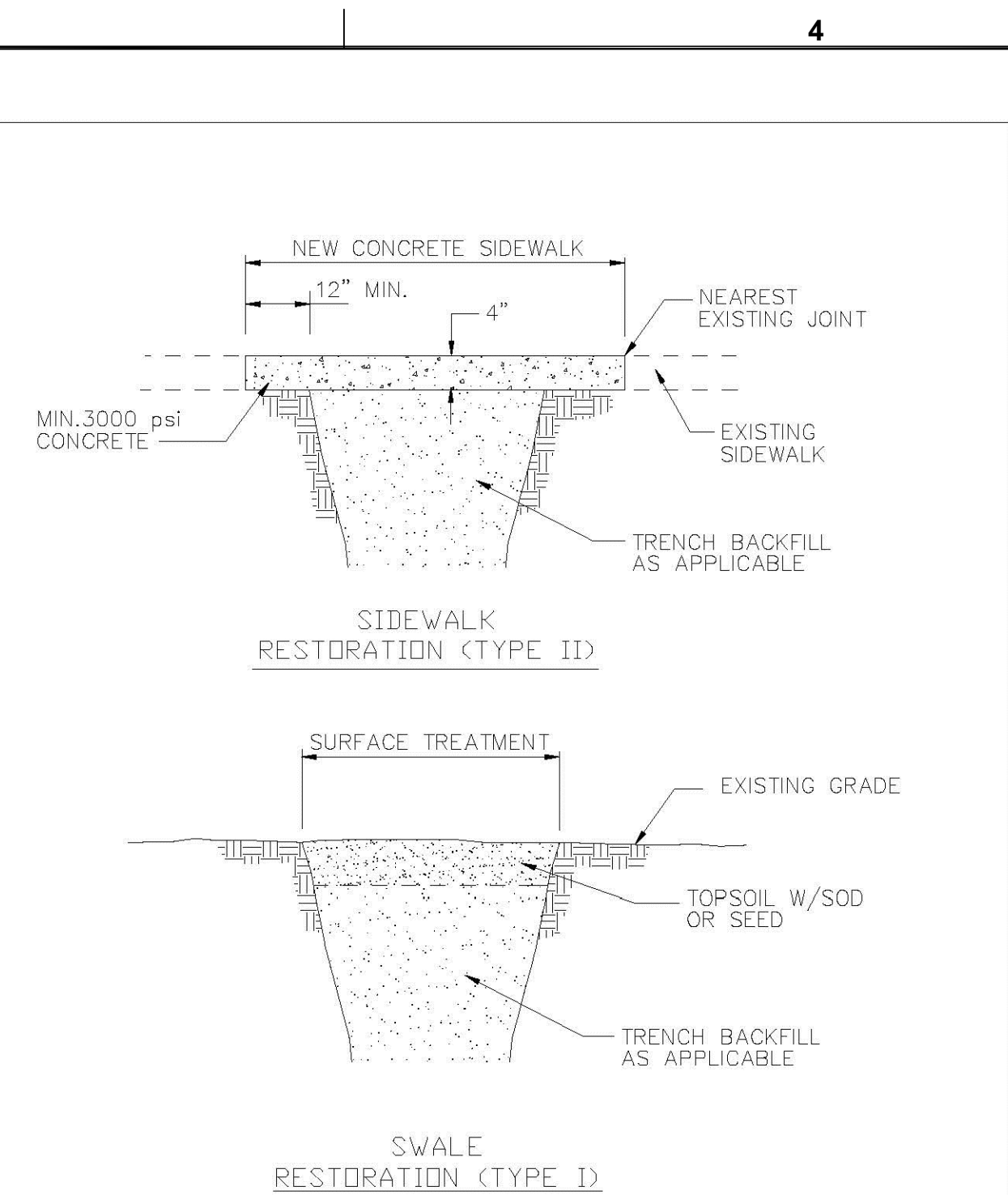
GUARD POST

ENGINEERING STANDARDS 2022				
REVISIONS		ENGINEERING DIVISION CITY OF POMPANO BEACH	GUARD POST	
BY	DATE			
		SCALE: N.T.S.	DATE: MAY 2022 DWG. NO. 304-1	



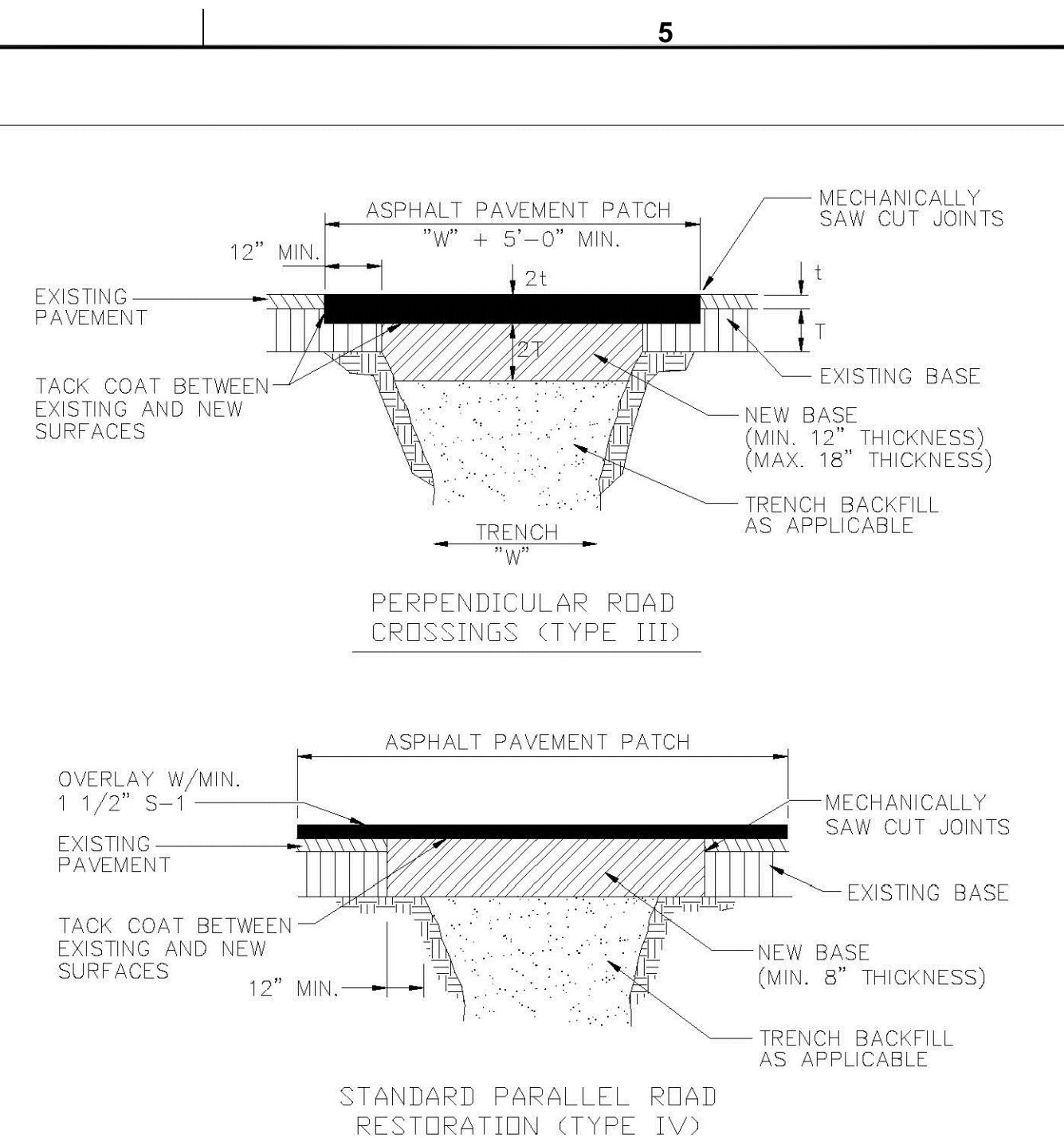
TYP. DRIVEWAY SWALE SECTION

ENGINEERING STANDARDS 2022			
REVISIONS BY DATE S.S. 6/21/07		ENGINEERING DIVISION CITY OF POMPANO BEACH	TYPICAL DRIVEWAY SWALE   <div>             DATE: MAY 2022              DWG. NO.              305-2           </div>
SCALE: N.T.S.			



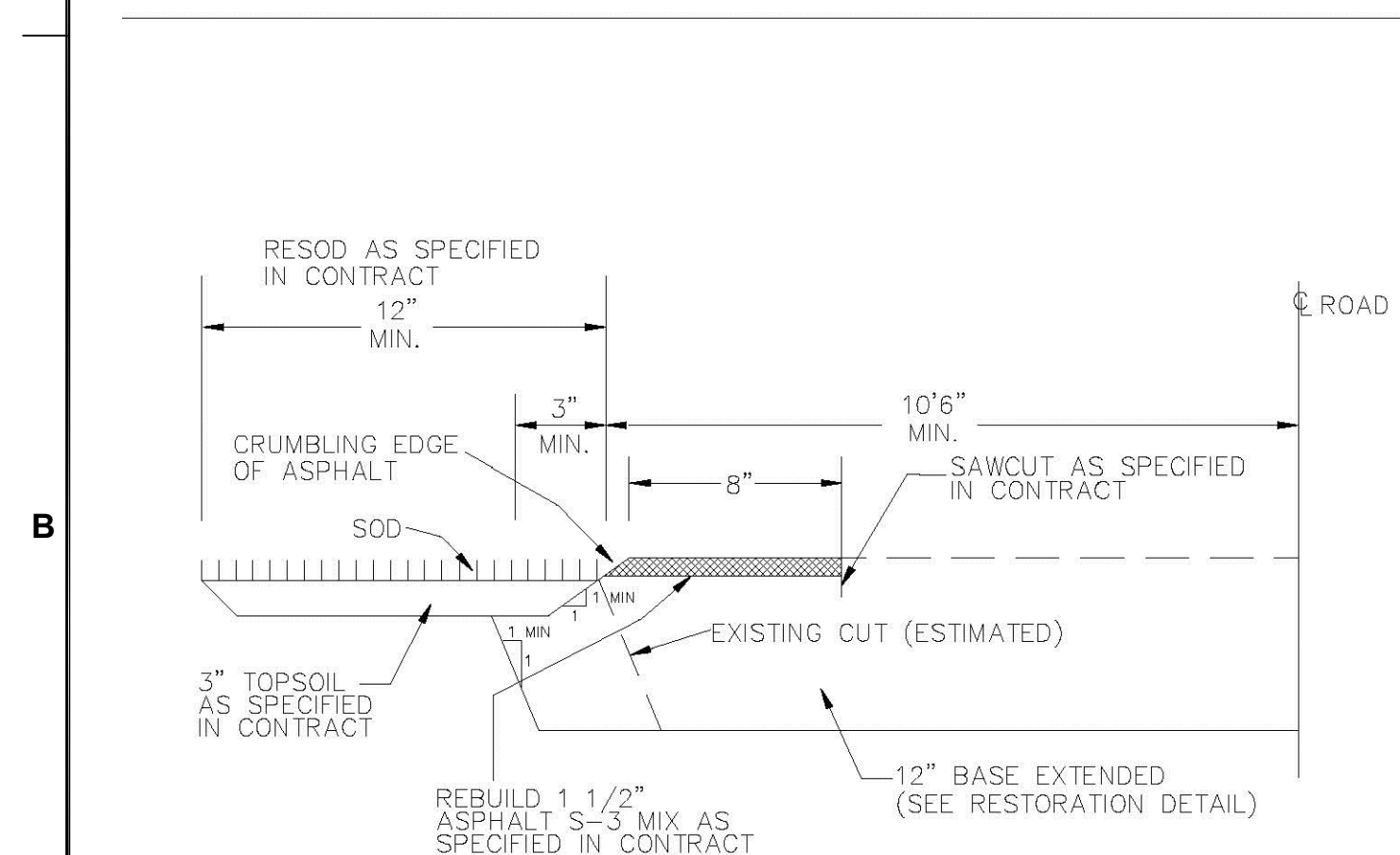
## SURFACE RESTORATION

ENGINEERING STANDARDS 2022			
REVISONS		ENGINEERING DIVISION CITY OF POMPANO BEACH	SURFACE RESTORATION
BY	DATE		
S.S.	5/05/10		
SCALE: N.T.S.			DATE: MAY 2022 DWG. NO. 306-1

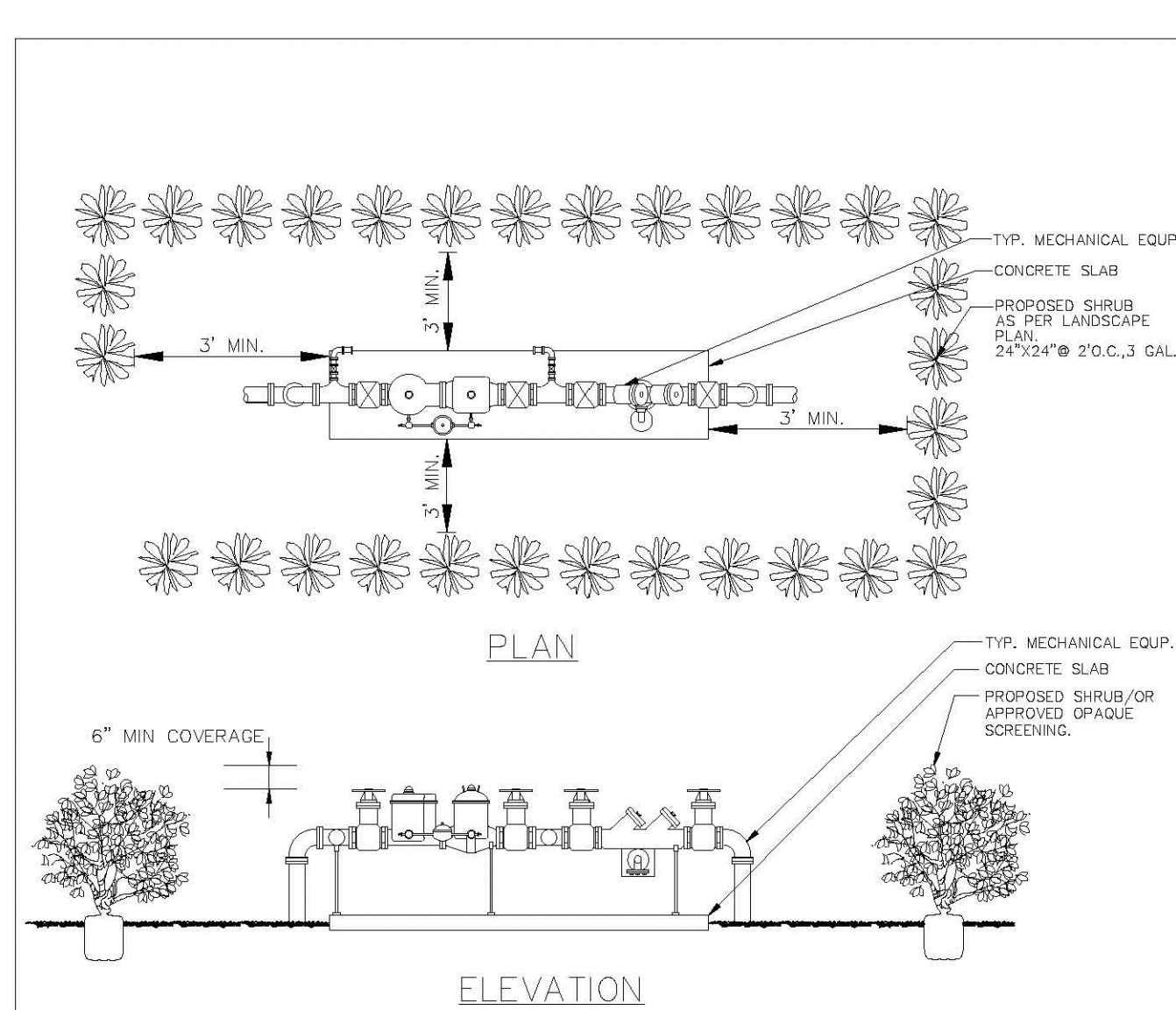


## SURFACE RESTORATION

ENGINEERING STANDARDS 2022			
REVISIONS		ENGINEERING DIVISION CITY OF POMPANO BEACH	SURFACE RESTORATION
BY	DATE		
SCALE: N.T.S.		DATE: MAY 2022 DWG. NO.	306-2

EDGE OF PAVEMENT  
RESTORATION

ENGINEERING STANDARDS 2022			
REVISIONS		ENGINEERING DIVISION CITY OF POMPAÑO BEACH	EDGE OF PAVEMENT RESTORATION
BY	DATE		
SCALE: N.T.S.			DATE: MAY 2022 DWG. NO. 306-4

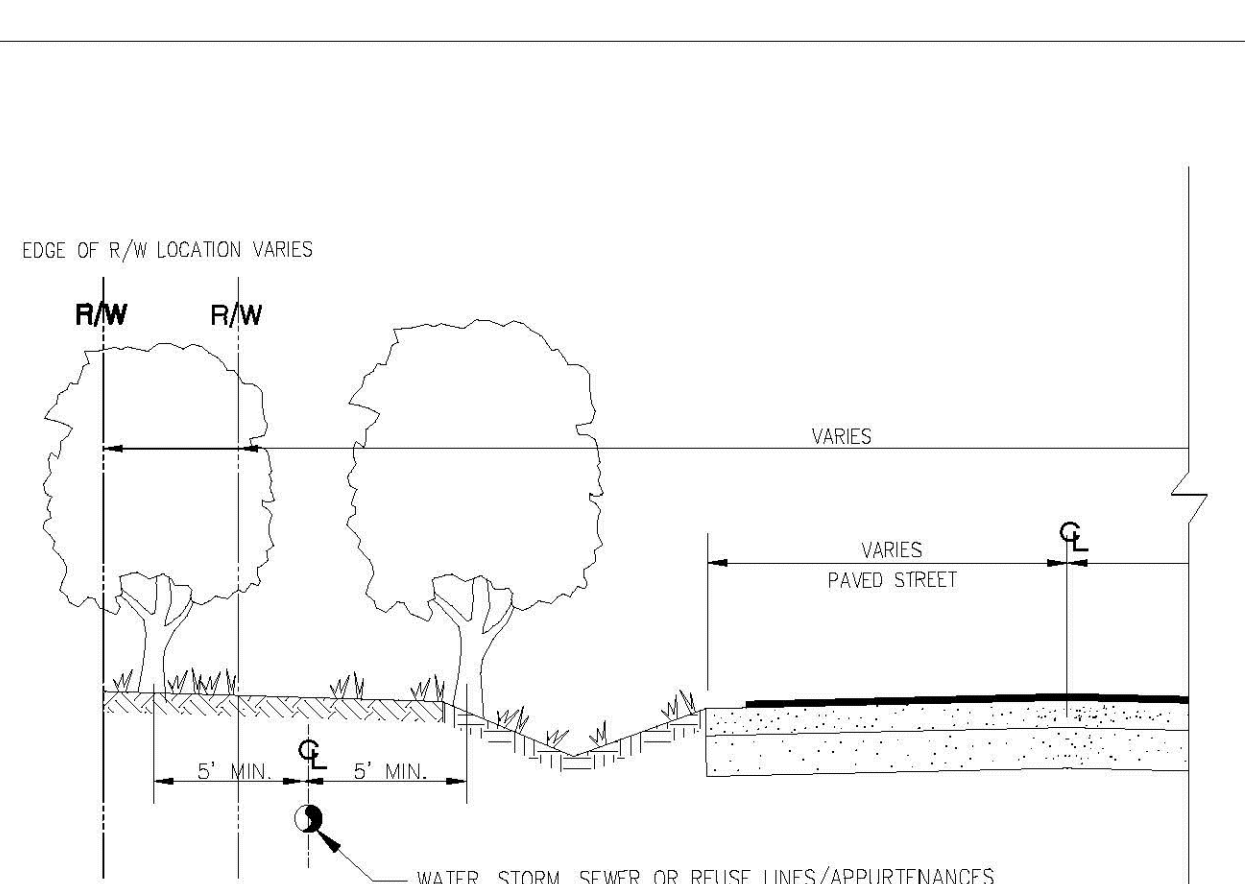


### TYPICAL SCREEN FOR UTILITIES

NOTES

PLEASE NOTE THAT AS PER CITY ORDINANCE(S) 50.02(A) (4) AND 100.35(E), STREET TREES SHALL NOT BE PLACED ON TOP OF OR 5' OF EITHER SIDE OF ANY CITY OWNED UTILITY INFRASTRUCTURE. ALSO, PLEASE NOTE THAT NO TREES SHRUBBERY OR OBSTRUCTION SHALL BE PLACED WITHIN A 3' RADIUS OF A CITY OWNED LATERAL CLEANNOUT OR WATER & OR REUSE METER.

ENGINEERING STANDARDS 2022			
REVISED		ENGINEERING DIVISION CITY OF POMPANO BEACH	TYPICAL SCREEN FOR UTILITIES
BY	DATE		
TCW	APRIL 2010		
SCALE: N.T.S.		APPROVED BY:	DATE: MAY 2022 DWC. NO. 315-1



### TREE LOCATIONS REQUIRED IN PUBLIC R/W ON UTILITY EASEMENTS

NOTES

PLEASE NOTE THAT AS PER CITY ORDINANCE(S) 50.02(A) (4) AND 100.35(E), STREET TREES SHALL NOT BE PLACED ON TOP OF OR 5' OF EITHER SIDE OF ANY CITY OWNED UTILITY INFRASTRUCTURE. ALSO, PLEASE NOTE THAT NO TREES SHRUBBERY OR OBSTRUCTION SHALL BE PLACED WITHIN A 3' RADIUS OF A CITY OWNED LATERAL CLEANOUT OR WATER & OR REUSE METER.

ENGINEERING STANDARDS 2022			
REVISIONS		ENGINEERING DIVISION CITY OF POMPAN0 BEACH	REQUIRED TREE LOCATIONS
BY	DATE		
SCALE: N.T.S.		APPROVED BY:	DATE: MAY 2022 DWC. NO. 316-1



**KEITH**  
 301 East Atlantic Blvd.  
 Pompano Beach, FL 33060  
 PH: (954) 788-3400

Florida Engineering Business License: CA7928  
Florida Surveyor and Mapper Business License: LB6860  
Florida Landscape Architecture Business License: LC2600045

[illegible]

**PRELIMINARY PLAN  
NOT FOR CONSTRUCTION**  
THESE PLANS ARE NOT FULLY PERMITTED  
AND ARE SUBJECT TO REVISIONS MADE  
DURING THE PERMITTING PROCESS.  
RESPONSIBILITY FOR THE USE OF THESE  
PLANS PRIOR TO OBTAINING PERMITS FROM  
ALL AGENCIES HAVING JURISDICTION OVER  
THE PROJECT WILL FALL SOLELY UPON THE  
USER.

ISSUE DATE:	07/14/2022
-------------	------------

DESIGNED BY: JW

DRAWN BY: FA/NW

CHECKED BY:	TD
-------------	----

BID-CONTRACT:

This item has been  
digitally  
signed and sealed  
by Thomas F.  
Donahue, P.E. on  
the date below  
using a Digital  
Signature.

Printed copies of this document are not considered signed and sealed and the signature must be verified on any electronic copies.

2022.07.13 19:18:03-04'00'

**THOMAS F. DONAHUE, P.E.**  
**FLORIDA REG. NO. 60529**  
**(FOR THE FIRM)**

## CLIENT

**US GATEWAY  
INVESTMENTS LLC**

PROJECT
---------

**GATEWAY LUXURY  
APARTMENTS**  
950 N. Powerline Road  
Pompano Beach, FL

**SHEET TITLE**

## PAVING, GRADING, AND DRAINAGE DETAILS

SHEET  
 NUMBER  
 PROJECT  
 NUMBER

CP 504  
 12697100

PZ22-12000008  
8/17/2022

**STATUS: PRELIMINARY**

Drawing name: T:\12697.00 - Powerline Road Pompano Beach - Multi Family Residence - US Gateway Investments\Engineering\Cadd\12697.00-CP-5XX.dwg